

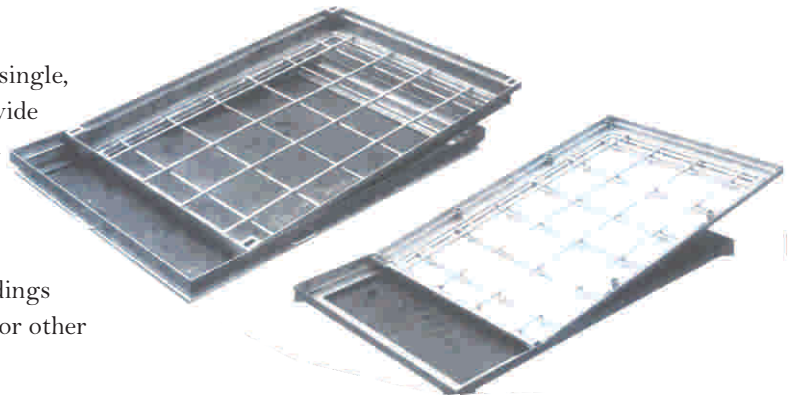
Burdens
Australia

Urban-Classic

A Versatile Cover System

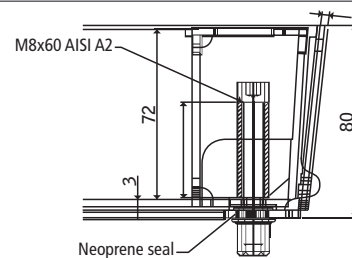
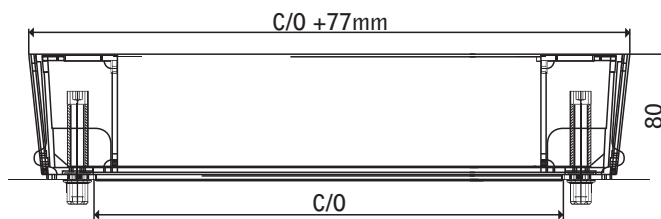
Technical Information

Burdens Urban-Classic is a comprehensive range of single, duct, and multi span access covers and frames to provide access to underground electrical, communication and utility infrastructure. The range can be used in virtually any situation where access to services and visual appearance are of paramount importance. All covers are designed to meet the specified test loadings when filled to the surface of the cover with concrete or other floor finishes such as tiles and pavers.



- Covers and frames are fabricated from 3 mm hot rolled steel sections.
- Covers & frames are made from either galvanised steel or high quality aluminium. Aluminium covers are designed to meet the requirements of areas requiring highly aesthetic finishes.
- Covers are supplied fitted with a solid plate bottom.
- The design of the covers is such that when fitted a minimal amount of metal is visible on the exposed surface.
- Covers are fitted with locking bolts for security purposes.
- Unsealed or double sealed covers are available.
- Deep pan allows for concrete bedding, reduced cutting and the quick and easy installation of pavers.
- Option of stainless steel or brass decorative edging available on request
- Covers are produced & certified to European Standard EN124 and conform to the Australian Standard of AS3996.

surface.



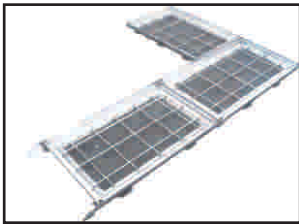
Single Covers & Frames

Non-standard sizes available upon request.

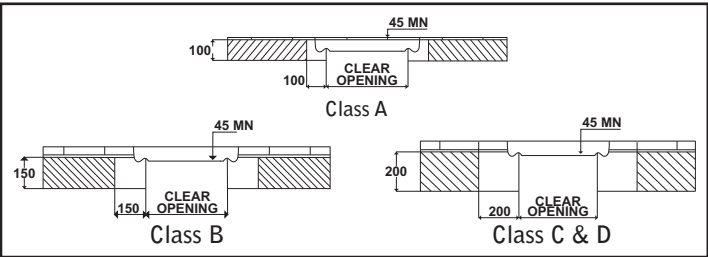





| Standard Sizes (full range of custom options available) | | | |
|---------------------------------------------------------|--------------------|------------|---------------|
| Pit Clear Opening Size | Overall Dimensions | Load Class | Overall Depth |
| 300mm x 300mm | 410mm x 410mm | A, B, C | 80mm |
| 450mm x 450mm | 560mm x 560mm | A, B, C | 80mm |
| 600mm x 400mm | 710mm x 510mm | A, B, C | 80mm |
| 600mm x 600mm | 710mm x 710mm | A, B, C | 80mm |
| 700mm x 700mm | 810mm x 810mm | A, B, C | 80mm |
| 900mm x 600mm | 910mm x 710mm | A, B, C | 80mm |
| 900mm x 900mm | 1010mm x 1010mm | A, B, C | 80mm |
| 1000mm x 1000mm | 1110mm x 1110mm | A, B, C | 80mm |
| 1320mm x 450mm | 1430mm x 560mm | A, B, C | 80mm |
| 1320mm x 600mm | 1430mm x 710mm | A, B, C | 80mm |
| 1320mm x 900mm | 1430mm x 1010mm | A, B, C | 80mm |
| 1900mm x 450mm | 2010mm x 560mm | A, B, C | 80mm |

Duct Covers & Frames

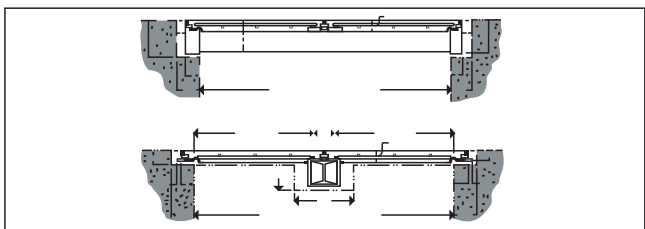
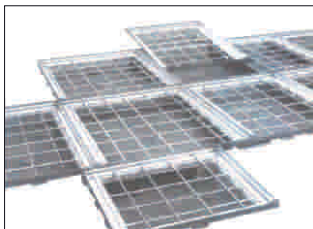
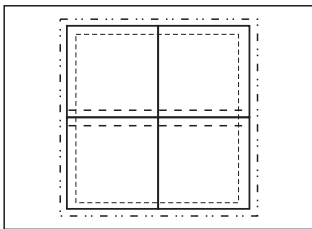


Installation Guide



| Standard Pit Opening Sizes for Duct Covers in Unit Form | | | | | | | | | | | | | | | | | | | | |
|---------------------------------------------------------|-----------------------------------------------------------------------------------|------|------|------|------|-----------------------------------------------------------------------------------|------|------|------|------|------|------|-------------------------------------------------------------------------------------|------|------|------|------|------|------|--|
| Pit Clear Opening Span | Pit Clear Opening Lengths | | | | | | | | | | | | | | | | | | | |
| | 1300 | 1450 | 1600 | 1750 | 1900 | 2000 | 2150 | 2300 | 2450 | 2600 | 2750 | 2900 | 3000 | 3150 | 3300 | 3450 | 3600 | 3750 | 3900 | |
| 300 | | | | | | | | | | | | | | | | | | | | |
| 450 | | | | | | | | | | | | | | | | | | | | |
| 600 | | | | | | | | | | | | | | | | | | | | |
| 750 | | | | | | | | | | | | | | | | | | | | |
| 900 | | | | | | | | | | | | | | | | | | | | |
| 1050 |  | | | | |  | | | | | | |  | | | | | | | |
| 1200 | | | | | | | | | | | | | | | | | | | | |
| 1350 | | | | | | | | | | | | | | | | | | | | |
| 1500 | | | | | | | | | | | | | | | | | | | | |

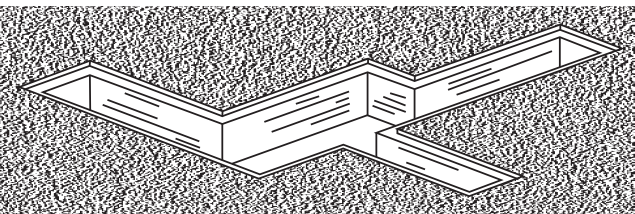
Multi Span Covers and Frames Incorporating Removable Support Beams



| Pit Clear Opening Length | | | | | | | | |
|--------------------------|-------------|------|------|------|------|------|------|------|
| Pit Clear Opening Span | Cover Spans | | | | | | | |
| | 1000 | 1300 | 1600 | 2000 | 2450 | 2700 | 3000 | 3300 |
| 1000 | | | | | | | | |
| 1300 | | | | | | | | |
| 1600 | | | | | | | | |
| 2000 | | | | | | | | |
| 2300 | | | | | | | | |
| 2600 | | | | | | | | |
| 3000 | | | | | | | | |
| 3300 | | | | | | | | |

Layouts and Special Configuration

Covers can be manufactured to suit virtually any formation of pits, including obtuse, accute, tee, right



angle and reducing junctions. Covers and frames to suit radial ducts can also be supplied.

Whenever possible, a layout drawing of the pits should accompany the enquiry.



Urban-Classic

A Versatile Cover System

LOAD CLASSIFICATIONS OF COVERS AND GRATES

| | | | Nominal wheel loading kg | Serviceability design load kN |
|-------------------------------------------------------------------------------------|-------------------|------------------------------------------------------------------------------------------------------------------------------------|--------------------------------|-------------------------------------|
|  | Class A10 | Areas (including footways) accessible only to pedestrians and pedal cyclists and closed to other traffic (extra-light duty) | 330 | 6.7 |
|  | Class B80 | Areas (including footways and light tractor paths) accessible to vehicles (excluding commercial vehicle) or livestock (light duty) | 2 670 | 53 |
|  | Class C150 | Malls and areas open to slow moving commercial vehicles (medium duty) | 5 000 | 100 |
|  | Class D210 | Carriageways of roads and areas open to commercial vehicles (heavy duty) | 8 000 | 140 |
|  | Class E400 | General docks and aircraft pavements (extra heavy duty - E) | 13 700 | 267 |
|  | Class F600 | Docks and aircraft pavements subject to high wheel loads (extra heavy duty - F) | 20 000 | 400 |
|  | Class G900 | Docks and aircraft pavements subject to very high wheel loads (extra heavy duty - G) | 30 000 | 600 |

NOTES:

1. Nominal wheel loads are given for guidance only. Consideration should be given to the type, size and pneumatic pressure of the load applied.
2. Class B design loads exceed AS 5100.2 requirements for footway loading.
3. Class D design loads exceed AS 5100.2 requirements for a W80 wheel load.
4. Class C units are based on an intermediate load.
5. The serviceability load is set at 2/3 of the ultimate limit state design load.
6. A force of 1 kN approximately equal to the weight of 100 kg.

Perth Depot

46 Ledger Road
Balcatta, Perth
Western Australia, 6021
Ph: (08) 9240 6170
Fax: (08) 9240 6175
E-mail: sales@burdens.net.au

Queensland Depot

3505 Pacific Highway
Slacks Creek
Queensland, 4127
Ph: (07) 3290 6121
Fax: (07) 3290 5486
E-mail : qldsales@burdens.net.au