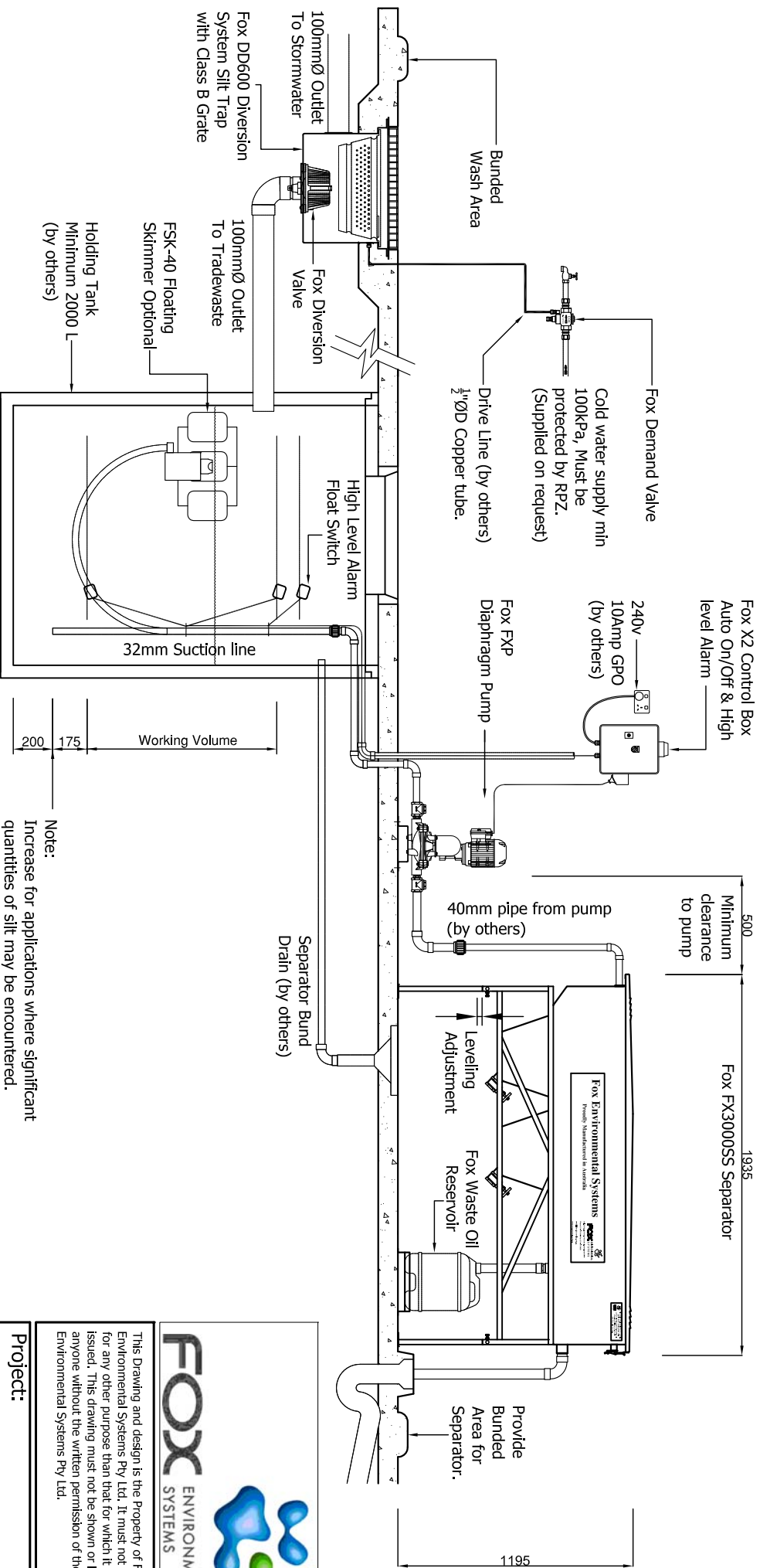


Schematic Detail of Typical Unroofed Washdown Treatment System



Note:
All washdown points must be installed down stream of the Fox Demand Valve. Non washdown points should be installed prior to the Demand Valve.

Note:
This unit is designed for use with "Quick Break Detergents" only. Use of solvent based detergents will affect the efficiency of the unit and may void the warranty.

Note:
This is a general layout drawing. It is essential that local trade waste and Australian Standards Requirements are complied with and incorporated into any treatment system design

Note:
Increase for applications where significant quantities of silt may be encountered.

Note:
This is a schematic representation only. Slab size and gradient to engineers details as arranged by customer. All plumbing and electrical connections to comply with local regulations.



This Drawing and design is the Property of Fox Environmental Systems Pty Ltd. It must not be used for any other purpose than that for which it was issued. This drawing must not be shown or lent to anyone without the written permission of the Fox Environmental Systems Pty Ltd.

Project:

Drawing Title:
Schematic Detail of Typical Unroofed Washdown Treatment System

Drawn by:	J.F.S
Date:	20/04/2009
Scale:	1:30
Drawing No:	A4 - TYP-1012-16